

Introducing **PLANETPRESS. SUITE** VERSION 7



Besides brand new and innovative features, PlanetPress Suite is still offered on a modular approach but includes two new variations of Objectif Lune's well-known workflow tool PlanetPress Watch.

The PlanetPress Suite Workflow Tools

COMPOSITION AND WORKFLOW ENGINES FOR PRODUCING VARIABLE DATA DOCUMENTS



**PLANETPRESS.
PRODUCTION**

Can output to any number of PostScript or non-PostScript printing devices with or without OL Printer licenses.*



**PLANETPRESS.
OFFICE**

Can output to any number of Windows® printer drivers and to all OL licensed PostScript devices.

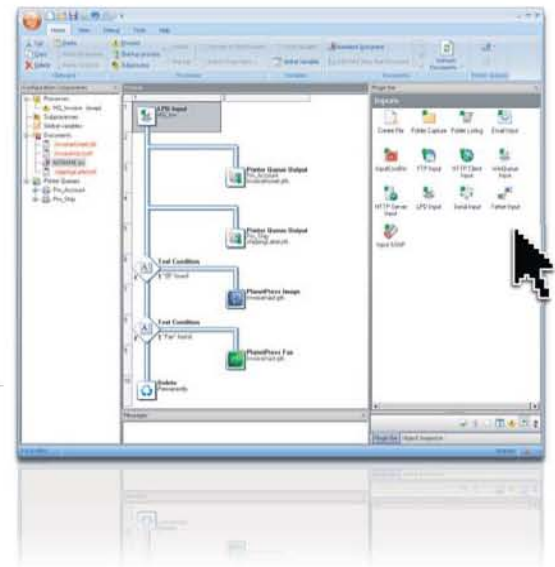


**PLANETPRESS.
WATCH**

Can output to licensed PostScript® devices only, driving printer centric devices for distributed applications.

*Note: PlanetPress Server customers covered by OL Care will receive PlanetPress Production as part of their upgrade.

DRAG & DROP FUNCTIONALITY FOR WORKFLOW



The PlanetPress Suite Companion Tools

FOR DOCUMENT DESIGN AND ENRICHMENT



**PLANETPRESS.
DESIGN**

For easy variable data document creation and any Windows & PDF document enrichment or repurposing.

FOR ARCHIVING AND ELECTRONIC DISTRIBUTION OF DOCUMENTS



**PLANETPRESS.
IMAGING**

Generates PDF, TIFF, JPG, VDX, PDF/X, PDF/A and AutoStore versions of variable data documents, emails and/or faxes and/or archives/indexes them automatically.

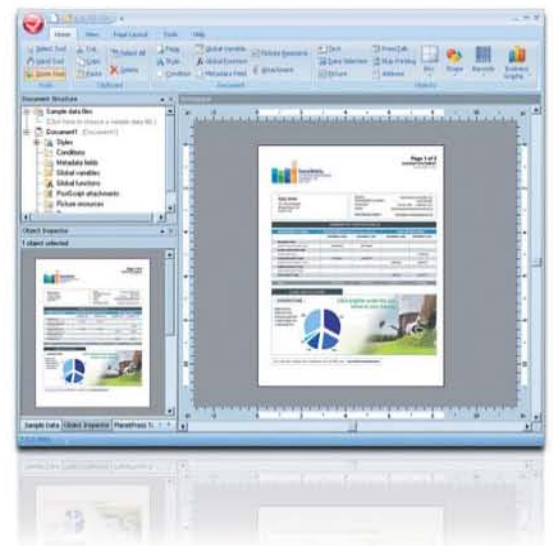
FOR OPTIMIZED PRINTING USING PRINTER CENTRIC PROCESSING



**PLANETPRESS.
PRINTER LICENSES**

Printing licenses for PostScript Devices. Licenses can be used with any of the workflow tools or as stand-alone items.

REVISED DESIGN INTERFACE



PLANETPRESS.SUITE



New Features

BELOW IS AN OVERVIEW OF THE MAJOR NEW FEATURES INCLUDED IN PLANETPRESS SUITE VERSION 7 AS WELL AS A LIST OF OTHER ENHANCEMENTS.

Major Features Overview

1. DOCUMENT INPUT

This feature allows PlanetPress Office and PlanetPress Production to capture and process fully composed documents in order to enrich and repurpose them. Its unique ability to extract text contents from the existing documents allows it to apply business rules to the existing document, whether to add or modify contents, apply finishing options, set distribution and archiving rules or split/concatenate existing jobs. The Document Input can process any ready-made PDF file or any print stream sent to the new Objectif Lune Printer Driver by any Windows application.

2. PDF HANDLING TOOLS

PlanetPress Office and PlanetPress Production offers true automated PDF workflow with native PDF creation, tasks to split and merge any PDF files, and workflow conditions based on PDF contents without the need for a PlanetPress Imaging license. In addition, PlanetPress Imaging now offers the industry standard PDF/A, PDF/X and AutoStore-compatible outputs at no extra charge.

3. NEW DRAG & DROP GUI

Sporting a fresh new look, PlanetPress Suite applications are easy to learn and use. New categorized ribbons allow the end-users to quickly locate tasks to perform. The drag & drop functionality has been extended to numerous common tasks so that users may now truly create and apply business rules, enhance and design documents at the click of a button.

4. MULTI-THREADED PLANETPRESS IMAGING SERVER

PlanetPress Imaging has been upgraded to a fully multi-threaded production server. It is now able to process several jobs simultaneously, taking full advantage of the underlying hardware architecture. Multiple licenses of PlanetPress Imaging can now be used to create a server farm capable of handling a large number of requests and mass-producing variable content documents.

5. SOAP CONNECTIVITY

The existing SOAP connector has been redesigned to handle all types of complex applications, allowing PlanetPress Suite to communicate with just about any third party application. In addition, all PlanetPress Suite workflow tools can now be configured as SOAP servers, allowing third-party applications - such as Web-based front ends - to submit jobs directly into PlanetPress Suite remotely.

6. VISTA SUPPORT

PlanetPress Suite applications can now run on the Windows Vista platform. With its new GUI, PlanetPress Suite now integrates smoothly with other Vista applications, greatly decreasing the end-user learning curve.

7. IMAGE CLIPPING

PlanetPress Design allows any part of an image to be clipped in or out. Photographs and logos can now be used in whole or in part, without changing the quality of the original image. Clipping out parts of the images allows background elements to show through the clipped image. This ability is also fully integrated into the Document Input feature, allowing end-users to quickly clip-out portions of the original, fully-composed document in order to replace them with new logos or text.

Other Features & Enhancements

PLANETPRESS. SUITE

- CJK fonts support Bold, Italics and font ratio properties.
- Applications are Terminal-Server aware
- Support for TrueType fonts with POST table other than 2.0
- Greatly improved performance when generating print jobs using cached images
- Greatly improved performance when generating jobs using IMB-OneCode

PLANETPRESS. IMAGING & DIGITAL IMAGING PLUG-IN

- VDX, AutoStore and PDF/A PDF/X plug-in
- Improved performance when generating PDF
- Double-byte fonts built incrementally allow for character selection in PDF

PLANETPRESS. WATCH

PLANETPRESS. OFFICE

PLANETPRESS. PRODUCTION

- Full support for all PrintShop Mail data stream types
- Document name can be set when printing to a Windows driver (for displaying in Queue)
- Scripts returning Boolean value can be used as a condition inside a process
- Printer Queue type can be modified after creation
- All configuration components can be imported from another process
- Send To Folder plug in can identify and concatenate PDF files
- Database task allows Dynamic SQL to use sorted fields
- Improved handling of MySQL numeric data types

PLANETPRESS. DESIGN

- Support for CDATA fields in XML data streams
- Elself() command supports optional Boolean expression for CASE-like statements
- Multiple sample data files can be loaded /saved in each document
- Print directly to any PlanetPress Office / PlanetPress Production on the subnet
- Drag & Drop data onto page layout to create Address Object
- LPI parameter can be set for Address Object

PLANETPRESS. SEARCH

- Support for Acrobat 9

Freelance Technologies Inc.

sales@freelancetech.com

www.freelancetech.com

540-949-7266

888.970.9944